

# City of Easthampton COVID-19 Weekly Dashboard

**14-Day Avg / 100k**  
5/15 – 5/28  
**↓ 70.6**

**7-Day Avg / 100k**  
5/22 – 5/28  
**↓ 60.0**

**7-Day Test Positivity**  
5/22 – 5/28  
**↓ 5.8%**

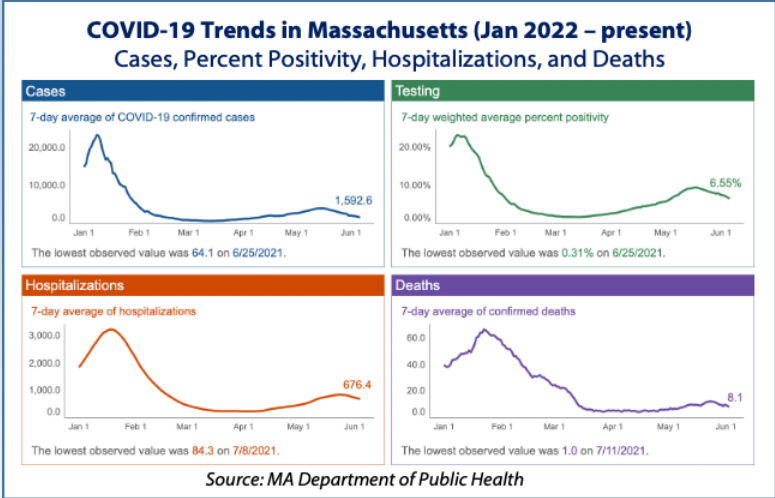
**14-Day Test Positivity**  
5/15 – 5/28  
**↓ 7.4%**

**New Cases Last Week\***  
5/25 – 5/31  
**↓ 59**

**Active Cases\*\***  
5/22 – 6/2  
**↓ 103**

**↓ Hampshire County**  
Daily Avg: 49.8/100k  
Test Positivity 5.9%

**↓ Hampden County**  
Daily Avg: 48.4/100k  
Test Positivity: 9.9%



City and County data are obtained from MDPH and MAVEN data sources and generally believed to be current and accurate. MDPH-reported 14-day and 7-day numbers only include confirmed cases. \*Includes confirmed cases (positive PCR test) and probable cases (positive antigen or antibody test, or clinically diagnosed based on symptoms and exposure, in the absence of a positive test result). \*\*Current active cases are considered infectious and under public health isolation guidance at the time of posting.

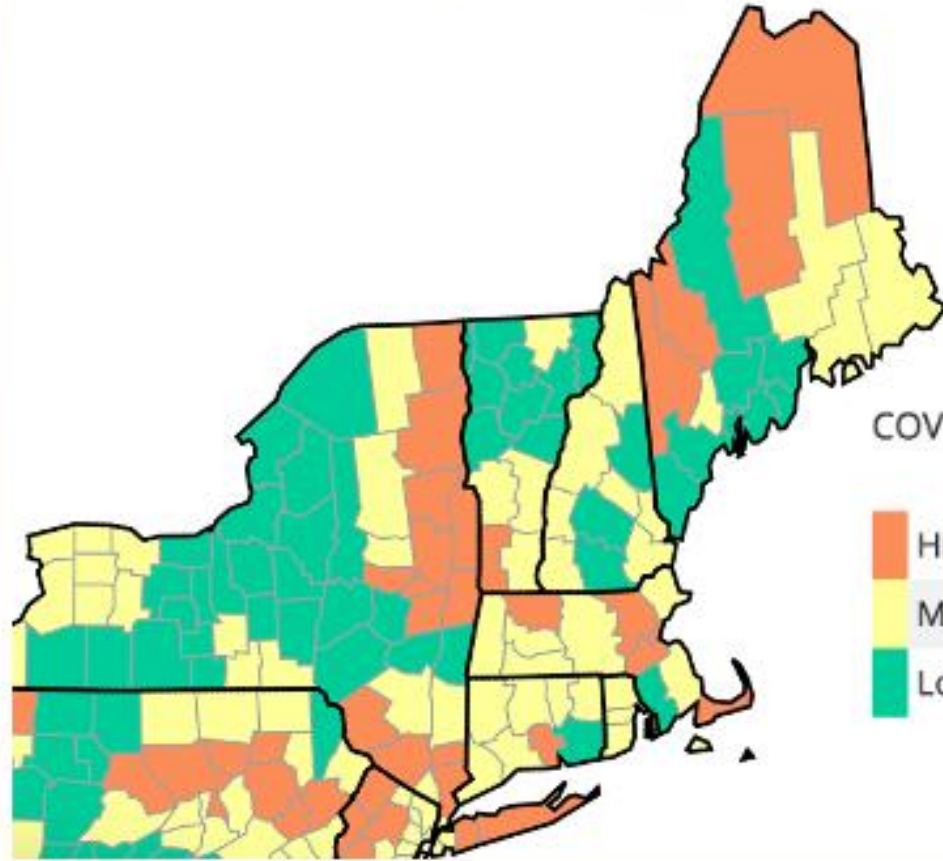
**54.0% fully vaccinated + booster dose**  
**81.5% fully vaccinated**  
**91.0% at least one dose**

**Total Cases to Date**  
**3432**

- GREY : ≤ 10 weekly total cases
- GREEN : < 10 average daily cases per 100,000 residents AND > 10 weekly total cases
- YELLOW : ≥ 10 average daily cases per 100,000 residents OR ≥ 5% positive test rate
- RED : ≥ 10 average daily cases per 100,000 residents AND ≥ 5% positive test rate

Updated 6/2/22

## CDC Community Transmission Categories June 2, 2022, Northeast United States

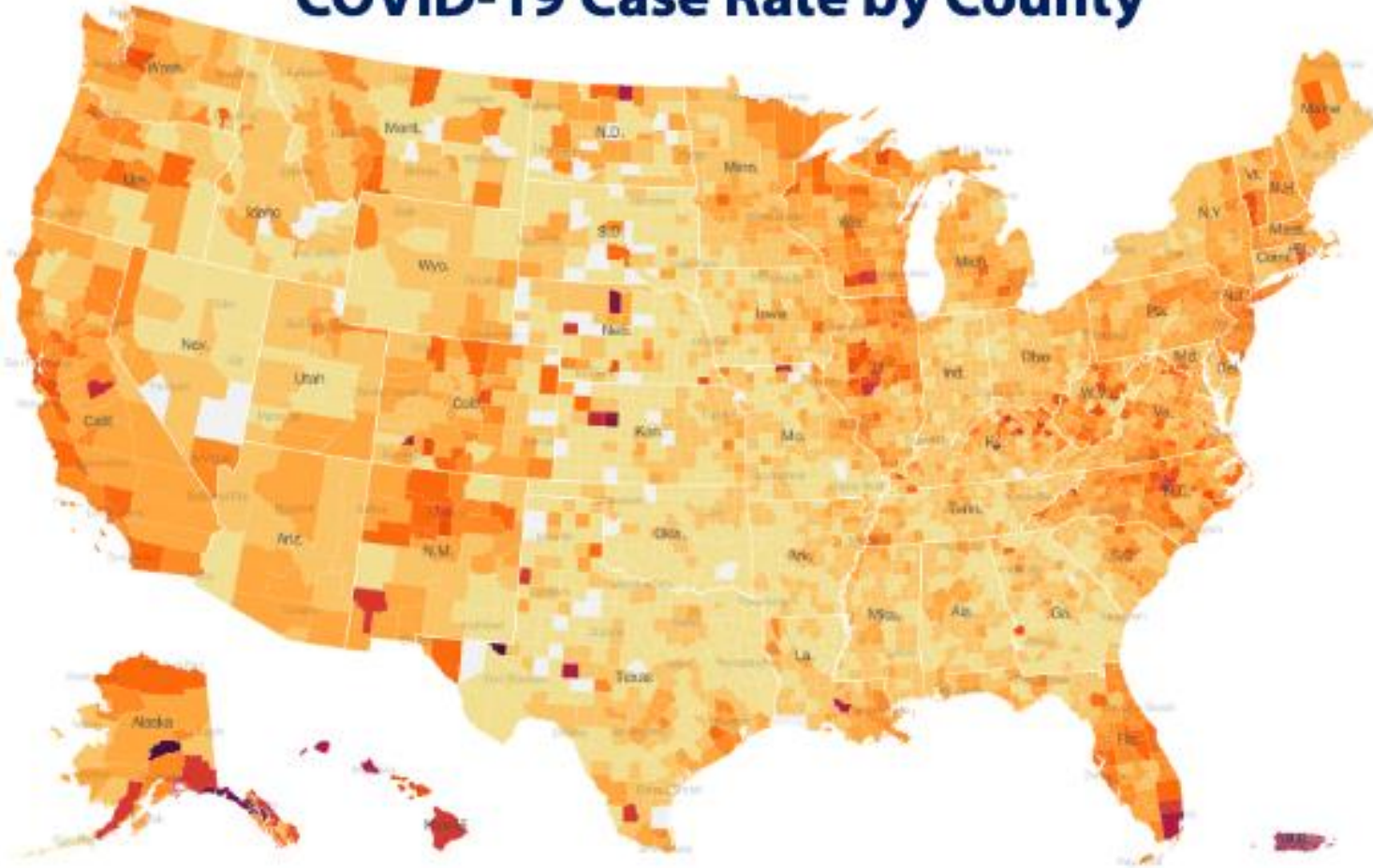


COVID-19 Community Levels in US by County

	Total	Percent	% Change
High	56	1.74%	0.5%
Medium	258	8%	0.93%
Low	2910	90.26%	- 1.43%

Source: Centers for Disease Control

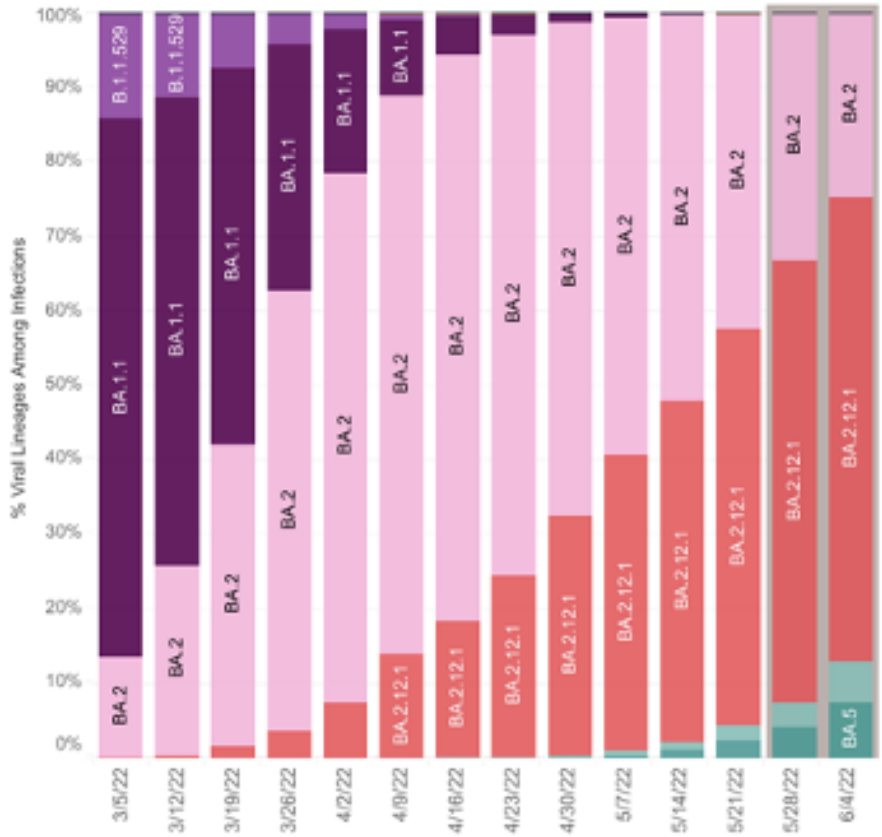
## COVID-19 Case Rate by County



Source: New York Times

# US COVID-19 Variant Data

## March 2022 - present



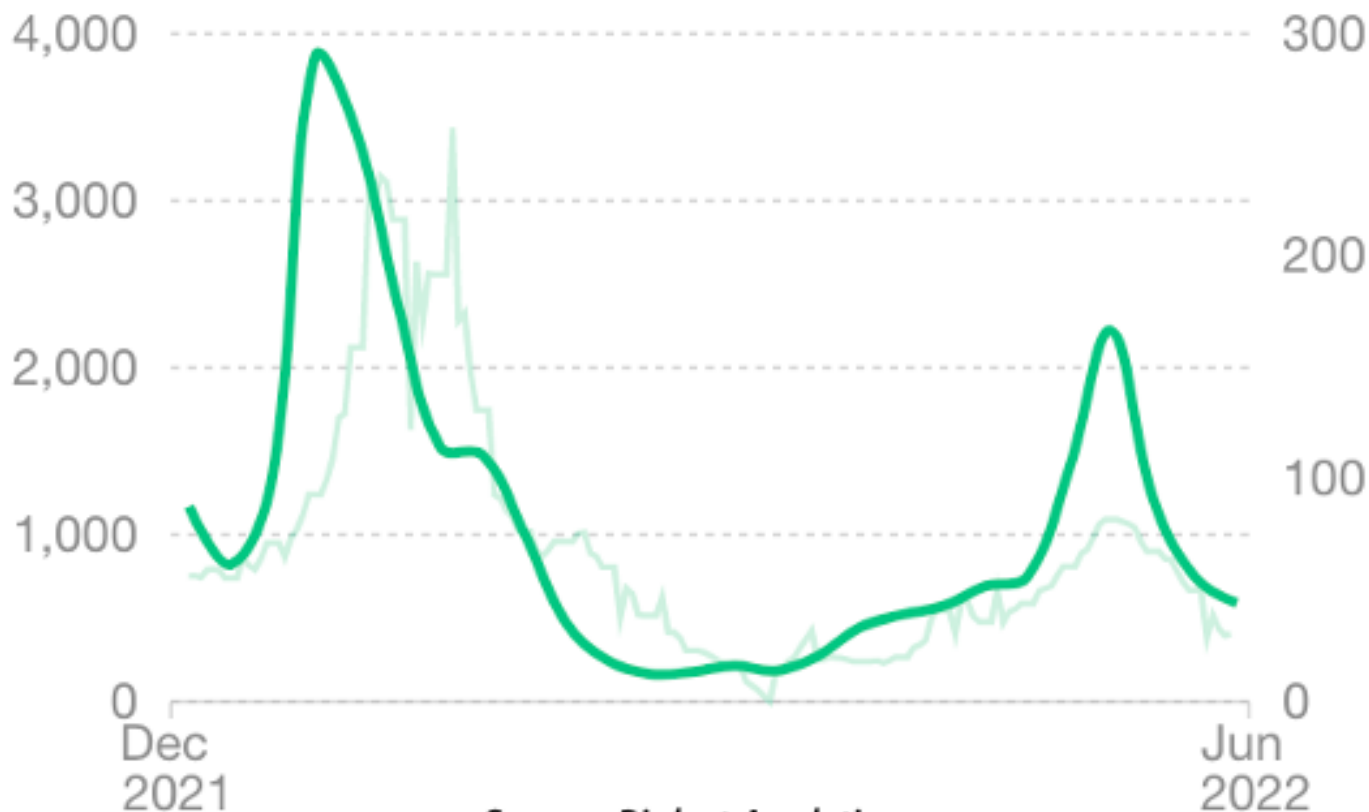
WHO label	Lineage #	Color
Omicron	BA.2.12.1	Red
	BA.2	Pink
	BA.5	Teal
	BA.4	Light Teal
	BA.1.1	Dark Purple
	B.1.1.529	Purple
Delta	B.1.617.2	Orange
Other	Other*	Dark Blue

Source: Centers for Disease Control

# Hampshire County COVID-19 Wastewater Monitoring

BA.2.12: 81.0% • BA.2: 18.8% • BA.1: 0%

Concentration of Virus in Wastewater  
(copies / mL of sewage)



Daily New Cases per 100,000 population

Source: Biobot Analytics